



# Trip Planning and Navigation with MS Streets & Trips, Garmin Nuvi, Droid

## [www.GeeksOnTour.com](http://www.GeeksOnTour.com)

Online Learning Library of Computer Tutorial Videos

## Trip Planning with Microsoft Streets and Trips

- Streets and Trips 2011 is available in a trial version for free. The Trial is a fully functioning copy of Streets and Trips. The only limitation is that it will stop working after the trial period.  
[www.microsoft.com/streets](http://www.microsoft.com/streets) Free Trial. Purchase price is \$39.95: Software only, \$69.95 includes GPS Receiver. 2011 operates the same as 2010. 2011 has updated maps and directions. Plus additional Places.
- Other Laptop Software  
Delorme Street Atlas: [www.delorme.com](http://www.delorme.com); ALK CoPilot. Trailer Life – trip planning only, Google Maps, Google Earth  
See [www.laptopgpsworld.com](http://www.laptopgpsworld.com) for lots of information on all of these.

## Creating a Route



**Use Route Planner in left pane.**

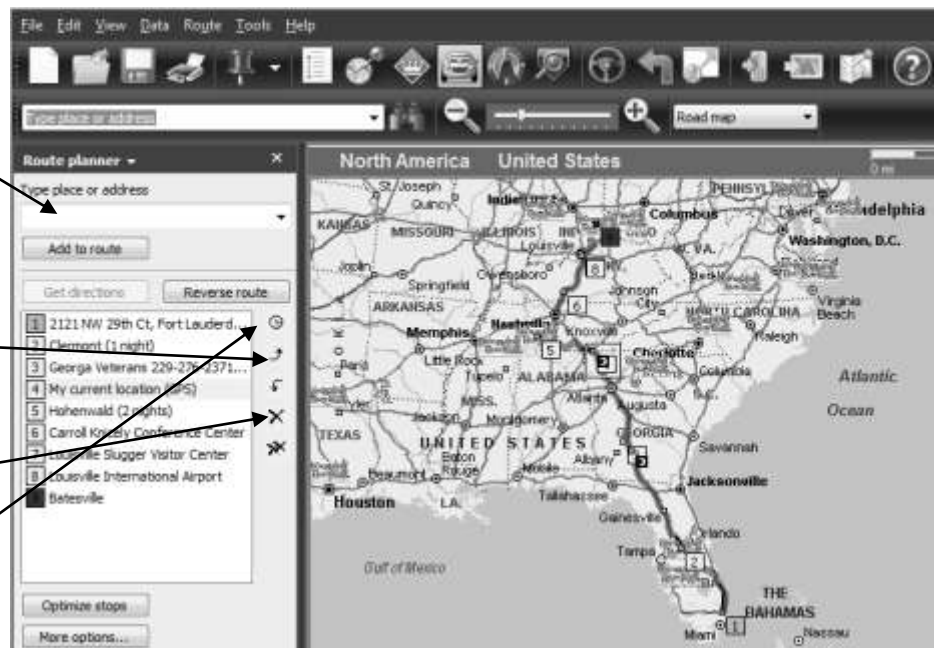
- Type place or Address, find it and Add to Route
- Or – Find place on map, right-click and add to route
- Move stops up or down in order with arrows to right
- Delete stops with X
- Set duration of stop with clock icon

### Get Directions

- Will draw a route based on your Stops.

### Save your File

- Opening that file again will bring up all the stops, pushpins, and routes you have created.




**Computer Learning Library!**  
Learn from our online library of Tutorial Videos  
(only \$39/year = access to ALL videos)

[www.GeeksOnTour.com](http://www.GeeksOnTour.com)



## Route Options

### Calculating Driving Time and Fuel Costs

-  When you view Turn by Turn directions, you will see a summary at the bottom with your driving time and fuel costs. This summary is based on your settings.
- Route menu, Route Options is where you change those settings

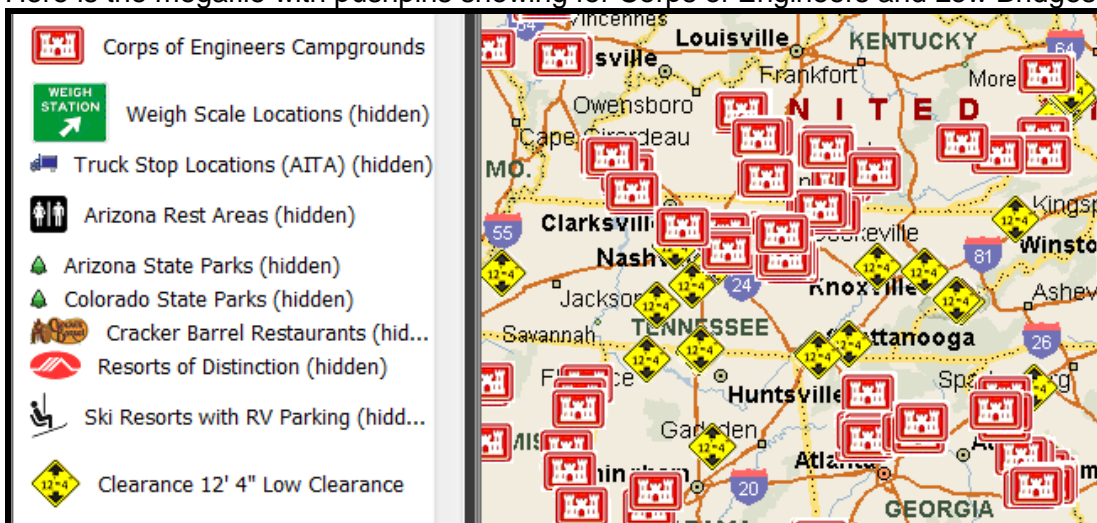
## Points of Interest and Pushpin Sets

- 'Points of Interest' or POIs for short is the term used to describe places like Businesses or Attractions. Places like cities and natural features like mountains and rivers are mandatory on maps, POIs are all the optional places. Navigation software is often judged by the number of POIs included.
- Streets and trips has 41 categories of Places from Airports to Wineries. Plus 16 categories of Restaurants all built in to the software.
- You can add your own places by creating a Pushpin.
- You can also add Pushpin Sets by downloading them from the web.

[www.discoveryowners.com/cginfo.cfm?](http://www.discoveryowners.com/cginfo.cfm?) [www.poi-factory.com](http://www.poi-factory.com)

The free **MegaFile** can be downloaded from [www.laptopgpsworld.com](http://www.laptopgpsworld.com) (See Video)

Here is the megafile with pushpins showing for Corps of Engineers and Low Bridges:



## Changing a Route

- Whenever you add a stop, delete a stop or rearrange your stops, just click 'Get Directions' to see the new route.
- You can also drag stops to new locations in the map view. Just be aware that this adds a stop automatically and may not be as accurate as creating a stop with an address.



### Follow us on Facebook!

[www.facebook.com/geeksontour](http://www.facebook.com/geeksontour)



## Using GPS

*You can buy a GPS receiver with S&T or separately*



- When you plug in a GPS device, you now have the option of letting S&T provide Navigation. Your location will always be displayed in red. You have the option of displaying next turn information in the bottom panel.
- You must click OK on the warning that you take responsibility for your driving and will not get distracted by S&T.

**Recalculate: See Navigating video**

- If you drive off-route, S&T will automatically follow you and recalculate a new route ... IF you have the option set ... Tools, Options, Navigation, Automatically re-route when off route.

**Views: See Views Video**

- While navigating using GPS, you have 3 choices for your map view:
  1. None: uncheck 'Arrange Map View' you can view any place
  2. Map View – keep location in view: **Centered** or with **Next Turn**
  3. Navigation View

## Handheld or Dashboard GPS:

*We have the Garmin Nuvi 255*

*We also have the Motorola Droid cell phone with free Navigation*

•

**Garmin (et al): Pros**

- Dedicated device
- Small, portable size – best for use in car
- Loud Speaker
- Ease of Navigating from \*here\* to nearby points of interest – best for use in car
- No Internet needed. Maps are in the unit.

**Garmin (et al) Cons**

- Small screen compared to laptop
- Difficult to plan multi-stop trip as compared to laptop
- \$ to update maps – update via connection to PC

**Droid (personal navigator) Pros**

- Free!, Always with you
- Integrated with other features on phone including Internet. E.g. open email with someone's address, touch it to navigate there
- Live Traffic data, Updated maps from Google Maps, Updated Street Views, Geocaching Apps
- Free!



**Droid Cons**

- Requires Internet connection. Your position comes from GPS satellite but all maps come from Internet. So when traveling in mountains, for example, you may not have maps available – making navigation useless.
- Phone calls get messy. Directions voice interrupts call, Call distracts from directions.

**Transfer Data to Garmin GPS device**

- Streets and Trips on your laptop is, in our opinion, THE best way to plan your trips. But, you may prefer to use a dashboard device for the on-the-road navigation part. If you have a Garmin, Streets and Trips has a built in procedure to transfer Route Stops from a Route in S&T to a Garmin device connected to your computer via USB.
- Download the Garmin Communicator Plugin: <http://www8.garmin.com/products/communicator/>
- Select the desired route on the Streets and Trips screen, then click Tools / Send Route to GPS Device



- When it's done transferring, you will have all the stops in your Garmin's Favorites.
- **See Geeks on Tour Video: 'Send Points to Garmin'**

**Learn More**

- This seminar briefly covers about 5 lessons. We have recorded tutorial videos on 13 lessons total. Each lesson is a 4-7 minute video. So, there are lots more to learn! You can buy the videos on our 'Show-Me-How' DVD, or they are also online as part of a Geeks on Tour membership.

**Streets and Trips Tutorial Videos (included on DVD or Online)**

Overview of Screen	 <p><b>Show-Me-How Videos</b>  <a href="http://www.GeeksOnTour.com">www.GeeksOnTour.com</a>  <i>Computer Education for Travelers</i></p>
Finding Places	
Pushpins	
Getting Help	
Import Data	
POI Files	
POI Megafile	
Plan a Route	
Add Stops to Route	
GPS Navigation	
Map Views for Navigating	
Optimize Stops	
Send Points to Garmin	